



Butterflies & Moths



On the Cover
Painted Lady Butterfly
(*Phymata sp.*)
hovering over a Hydrangia

*(According to English folklore, the name
'Butterfly' arose from "Flutterby", an early
designation that, quite accurately,
described its flight pattern.)*

© 2018 J. G. Porter
gerryporter1@gmail.com
<https://www.flickr.com/photos/86181924@N02/>



Painted Lady Butterfly
(*Chauliognatha pennsylvanicus*)



European Skipper Butterfly
(*thymelicus lineola*)

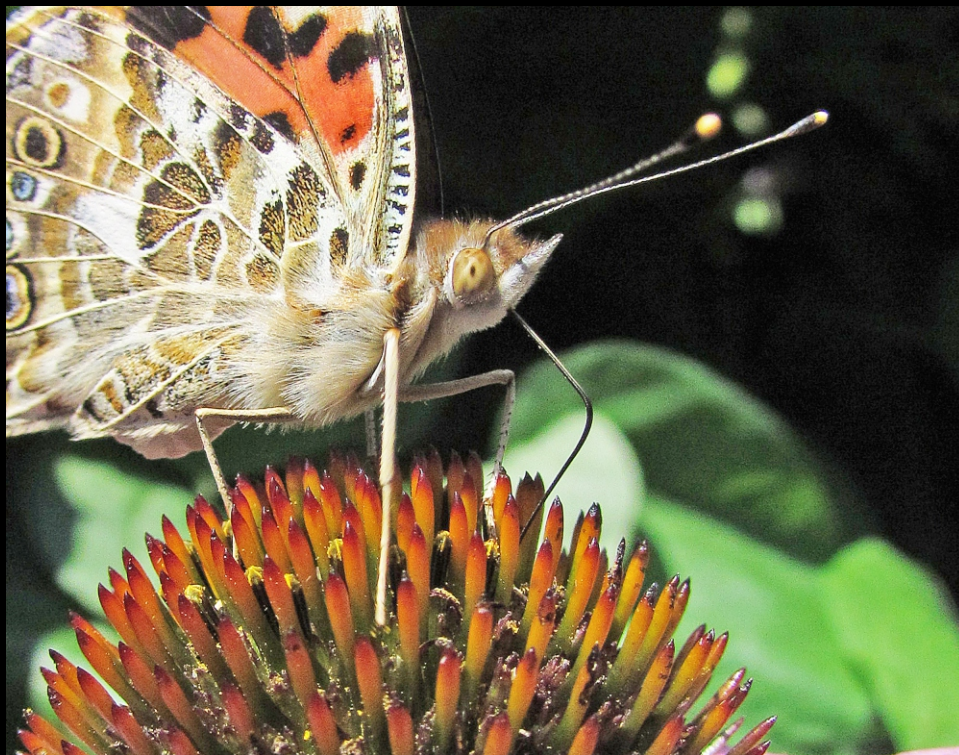


European Skipper
(*thymelicus lineola*)
Britannia Meadow





Painted Lady Butterflies (*Vanessa kershawi*)
on a **Coneflower** (*Echinacea*)

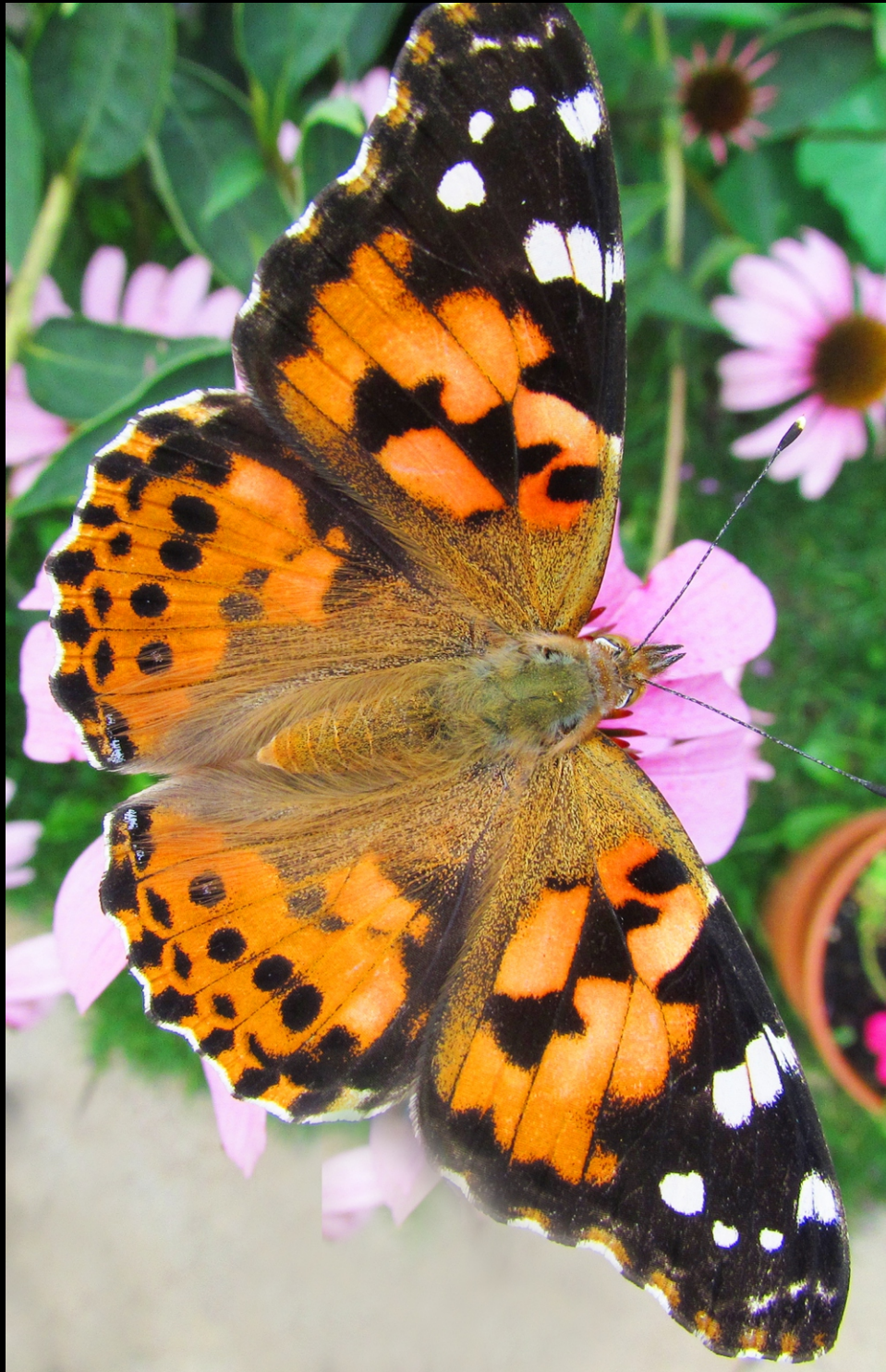




Painted Lady on Hydrangia
(*Vanessa atalanta*)



Bumble Bee (*Bombus*) & Painted Lady (*Vanessa atalanta*)
on a **Coneflower (*Echinacea*)**



Painted Lady Butterfly
(*Vanessa kershawi*)



Cabbage White Butterfly
(*Pieris rapae*)





Moth Garden Grass-veneer
(*Chrysoteuchia culmella*)



Ruby Tiger Moth
(*Phragmatobia fuliginosa*)



Unidentified Moth



Blinded Sphinx Moth
(*Paonias excaecata*)

My two morning-coffee friends and I recently encountered this unfamiliar creature near the café (late May). We took several telephone-camera shots, but decided on this one taken later with a Canon SX50. Tiring of the unwanted attention, he labouriously crawled up under an overhanging door frame.
Body length ~1.25" - wing spread ~2.5".

"It ranges throughout most of the United States and southern Canada from Nova Scotia and Maine south to Florida; west to B.C. and Washington, northern California, and Arizona."

<https://www.butterfliesandmoths.org/species/Paonias-excaecata>



J. G. Porter
(Likeness by C. S. Henry)

gerryporter1@gmail.com