



Twenty-one Shades  
of Gray



NCO Club, USAF Radar Station,  
Goose Bay, Labrador, 1961



20 minutes west of Ottawa



15 minutes south of Ottawa





Britannia Meadow, Ottawa



A neighbour's garden





A Roundabout, not in Canada



A pleasant fellow, Byward Market,  
Ottawa, ~1995



Ottawa River



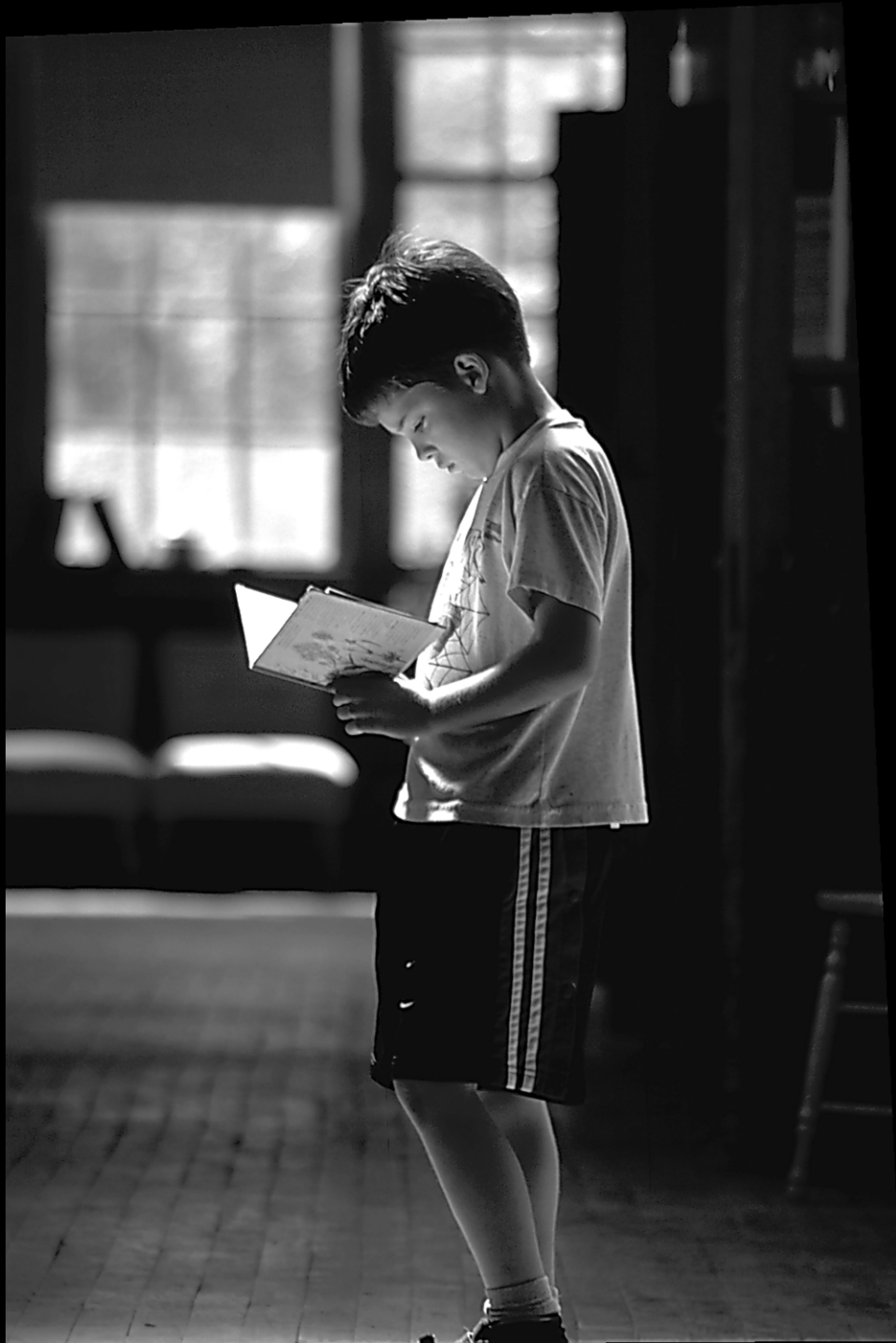
Britannia Forest, Ottawa  
(photo by my son, Gerry)





Lisa and Paul's Church at  
Ochre Pit Cove,  
Newfoundland





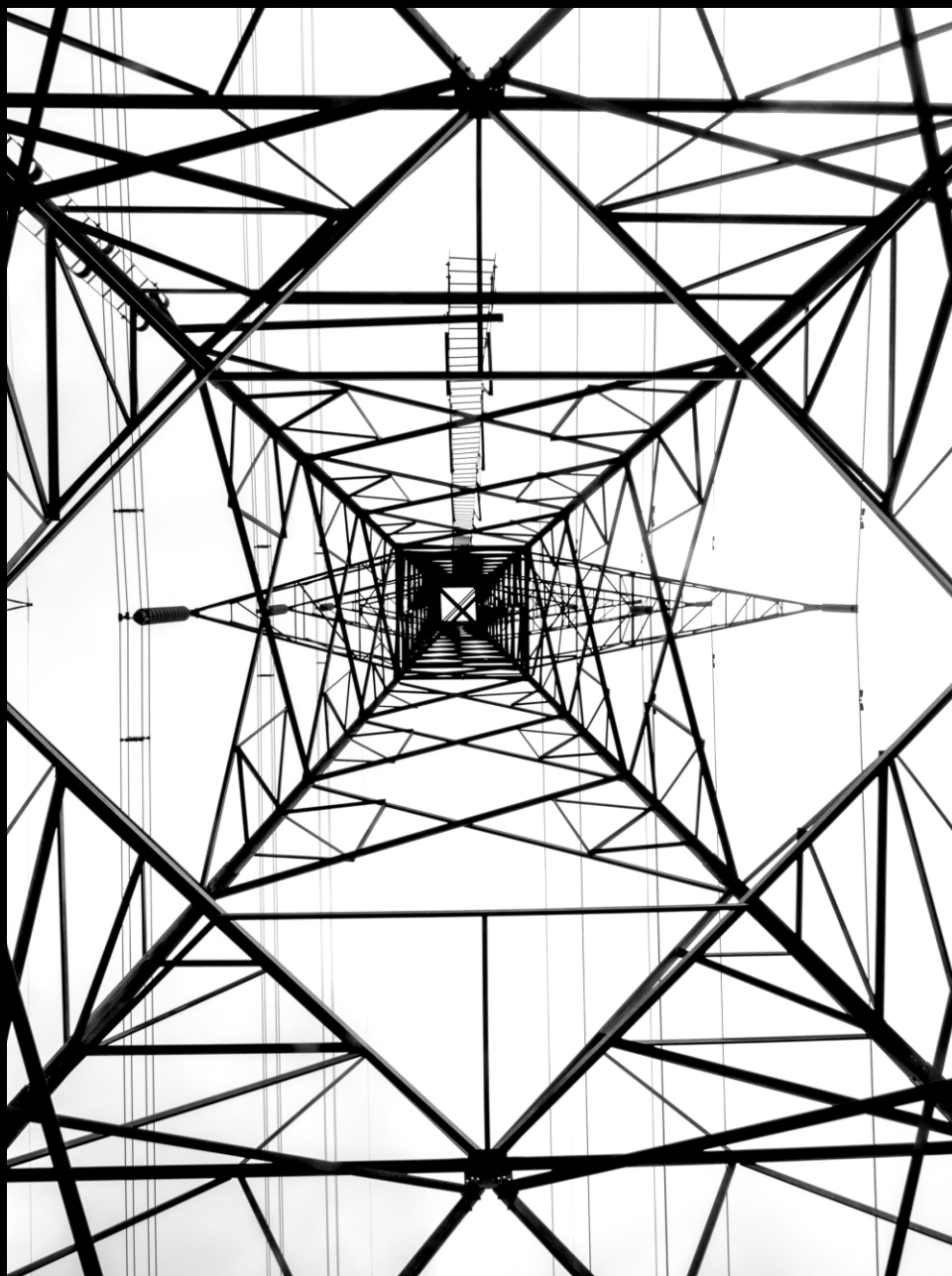
James, in Alberta, 1998



Field of Corn  
several miles south-west of Ottawa



Street Scene, near Ottawa



Hydro-electric tower, Hwy 7,  
between Lindsay and Newmarket, Ontario



An island in the Ottawa River,  
Ottawa across the way.



Small black beetle, perhaps a *Brachypnoea*,  
dining on a blossom's bounty.







Leaves in Spring against a foggy background.





April Amble