



**Wee
Creatures
No. 6**



-: Cover :-

Ant foraging, Pinks
Dianthus (*gratianopolitanus*)

Wee Creatures No. 6
J. G. Porter

<https://www.flickr.com/photos/86181924@N02/>



Ruby Tiger Moth
(*Phragmatobia fuliginosa*)

(I'm not at all sure that this is a Ruby Tiger Moth.
Based on coloring only, it is my best guess.)



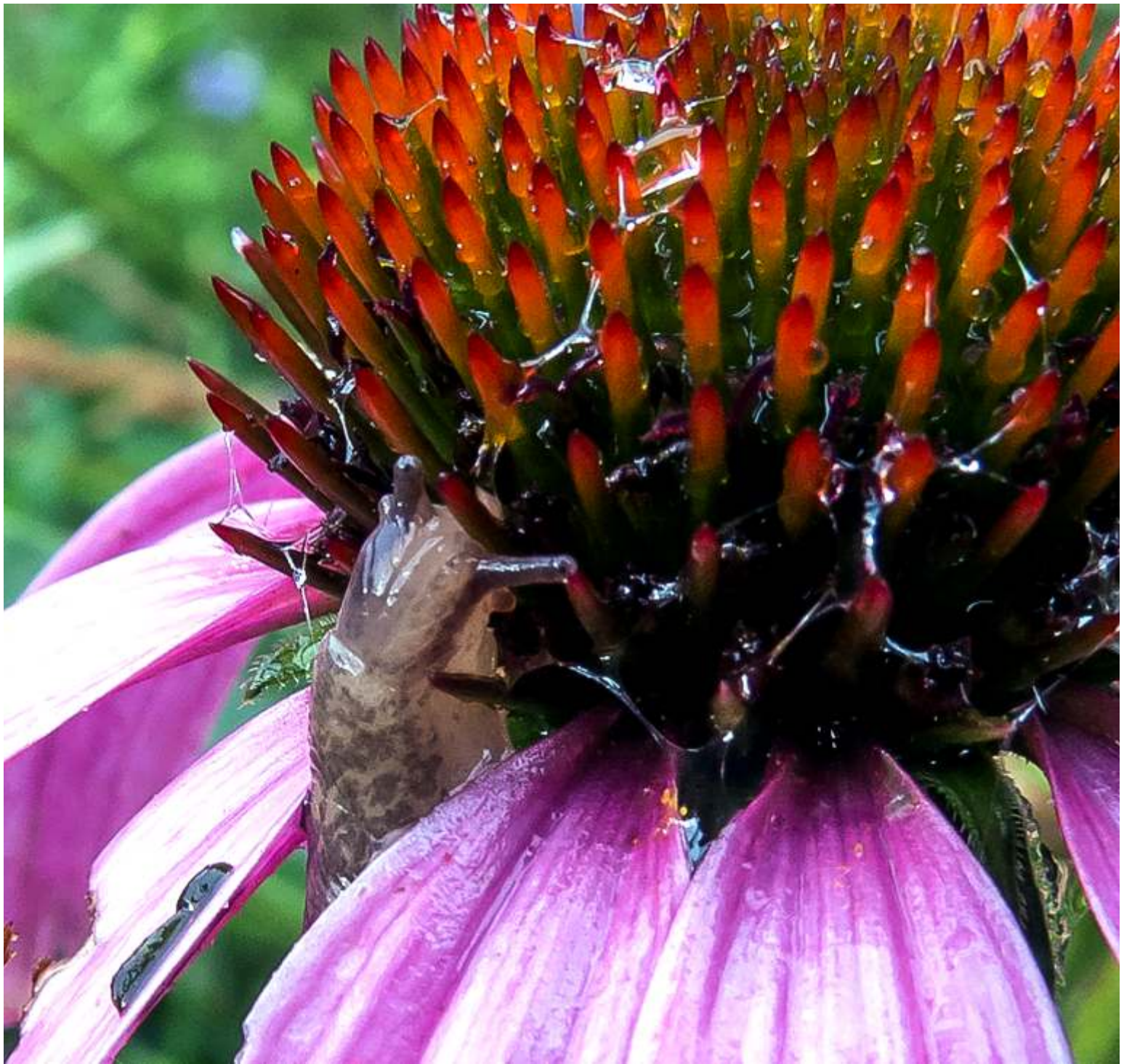
Green Bottlefly (*Lucilia sericata*)
dining on a Dianthus Pink.

**Bumble Bee (*Bombus*) and a
Green Bottle Fly (*Lucilia sericata*)**
sharing the bounty.





Asian Ladybeetle (*Harmonia axyridis*)



Garden slug dining on a Purple Coneflower.



Syrphid fly
(*Eristalis pertinax*)
i.e. **Drone fly**
(*Eristalis tenax*))



Syrphid Flies (*unsure of species*)
In Britannia meadow

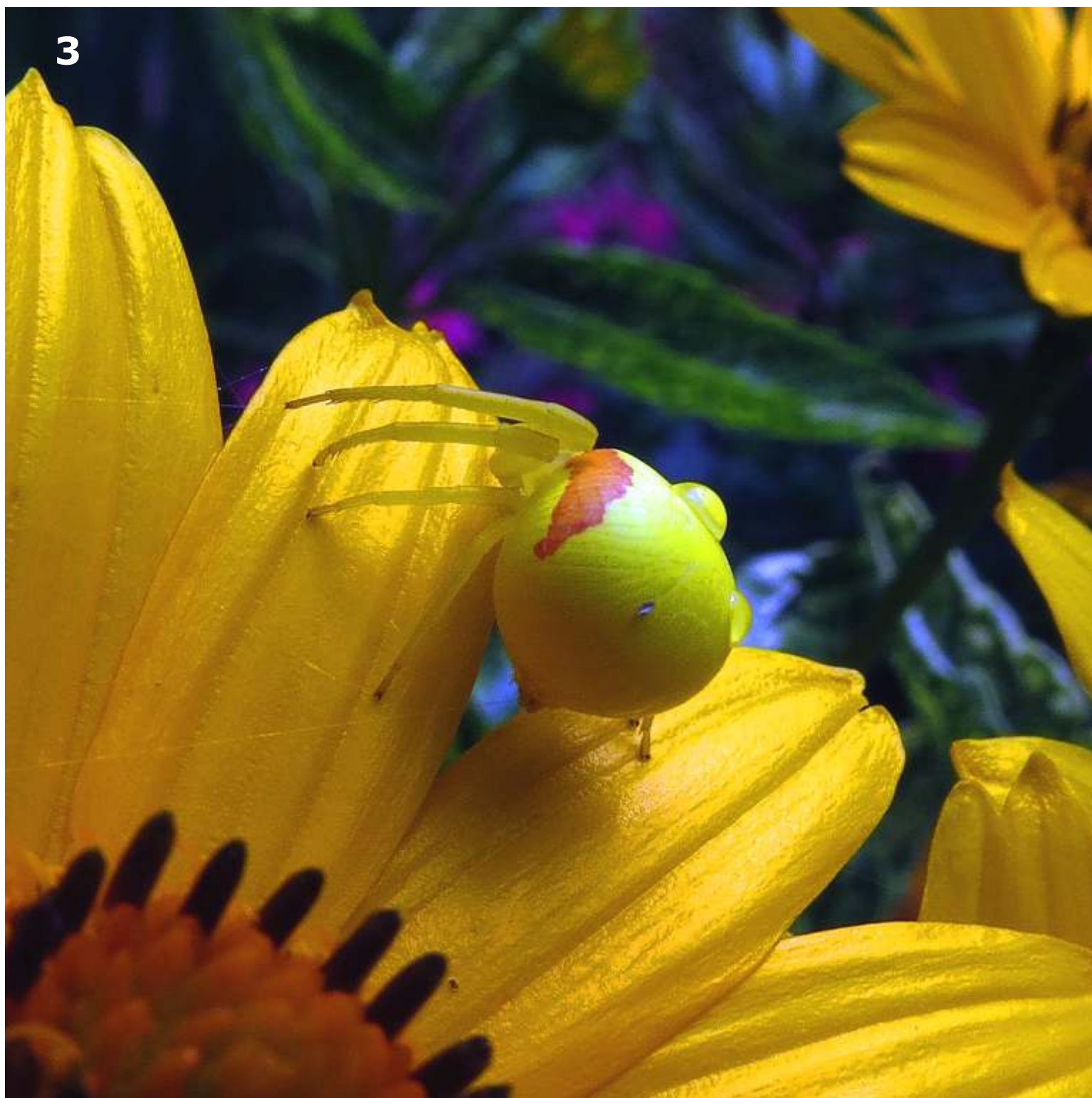
**1. Goldenrod Crab
Spider (*Misumena vatia*)**

Alarmed by the looming
camera, the spider darted
for safety beneath a petal.

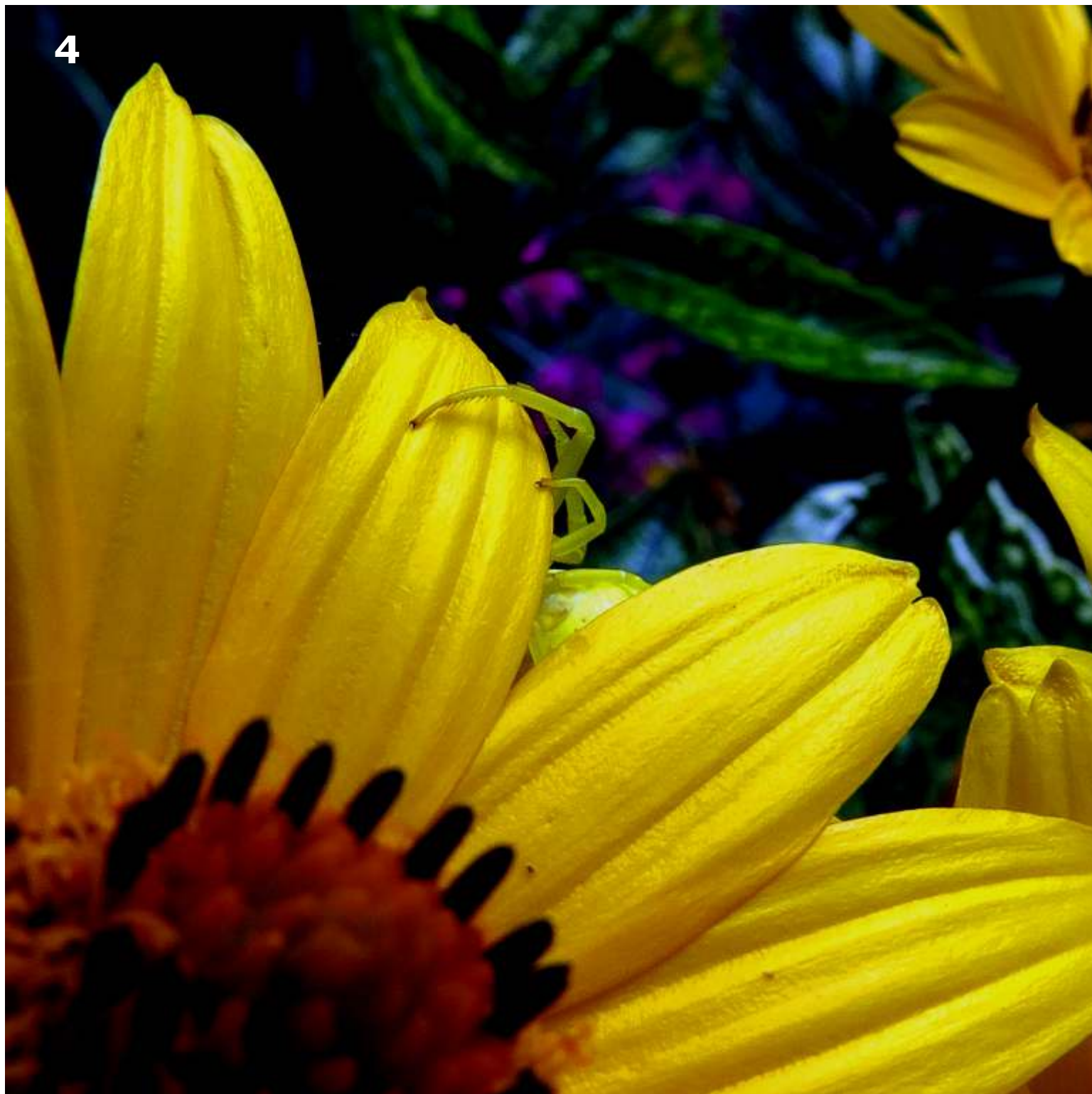


2





4





Bumble Bee (*Bombus*)
If you have ever wondered
what the back end of a
Bumble Bee looks like,
your quest is over.



A spider dining on a fly.



Two Beetles ***Baris sp. Baris*** (*Bellis perennis*)
on a daisy in a neighbourhood garden.



Japanese Beetle (*Popillia japonica*)



This might be a Paper Wasp - on the outside
looking wistfully in.



Crab Spider
dining on a
Green bottle fly
on a Garlic Chive



I can't be sure, but this might be an **Orange Tip Caterpillar**.